

Cacti

Cacti est une surcouche à rrdtool qui permet de stocker tout ce qui vous est nécessaire.

Cacti

cacti - Microsoft Internet Explorer

File Edit View Favorites Tools Help

Back Forward Stop Home Search Favorites Media Print

Address http://web/cacti/cacti-0.8/host.php

console graphs Logged in as admin

Graph Setup
Graph Management
GPRINT Presets
Graph Trees
Colors
Templates
Graph Templates
Host Templates
Data Templates
Data Gathering
Data Sources
Polling Hosts
Available RRA's
Data Input Methods
Data Queries
CDEF's
Configuration
Utilities
Cacti Settings
Utilities
User Management
Logout User

Save Successful.


Create 2 Graphs from SNMP Query
SNMP Query [SNMP - Interface Statistics]
Interface - Traffic -> Index Type
When these graphs are created, the following data input field will be filled with data from the SNMP host. ifIndex (Index)

Graph [Template: Interface - Traffic (bytes/sec)]
Title Using Suggested Values (see SNMP Query)
Data Source [Template: Interface - Traffic]
Name Using Suggested Values (see SNMP Query)
Maximum Value Using Suggested Values (see SNMP Query)
Maximum Value Using Suggested Values (see SNMP Query)

Create 3 Graphs from SNMP Query
SNMP Query [ucd/net - Get Monitored Partitions]
ucd/net - Hard Drive Space -> Index Type
When these graphs are created, the following data input field will be filled with data from the SNMP host. dskIndex (Index)

Graph [Template: ucd/net - Available Disk Space]
Title Using Suggested Values (see SNMP Query)
Data Source [Template: ucd/net - Hard Drive Space]
Name Using Suggested Values (see SNMP Query)

cancel save



Done Local intranet

Cacti

cacti - Microsoft Internet Explorer

File Edit View Favorites Tools Help

Back Forward Stop Home Search Favorites Media Print Mail

Address http://web/cacti/cacti-0.8/host.php?action=edit&id=2

console graphs Logged in as admin

Graph Setup

- Graph Management
- GPRINT Presets
- Graph Trees
- Colors

Templates

- Graph Templates
- Host Templates
- Data Templates

Data Gathering


- Data Sources
- Polling Hosts
- Available RRA's
- Data Input Methods
- Data Queries
- CDEF's

Configuration

- Utilities
- Cacti Settings

Utilities

- User Management
- Logout User



Polling Hosts [edit: Radish]

Description
Give this host a meaningful description. Radish

Host Template
Choose what type of host, host template this is. The host template will govern what kinds of data should be gathered from this type of host. ucd/net SNMP Host

Hostname
Fill in the fully qualified hostname for this device. 192.168.1.101

Management IP
Choose the IP address that will be used to gather data from this host. The hostname will be used a fallback in case this fails. 192.168.1.101

SNMP Community
Fill in the SNMP read community for this device. public

SNMP Username
Fill in the SNMP username for this device (v3).

SNMP Password
Fill in the SNMP password for this device (v3).

SNMP Version
Choose the SNMP version for this host. Version 1

Associated SNMP Query
If you choose to add this SNMP query to this host, information will be queried from this host upon addition. None **add**

Create Associated Graphs + Data Sources

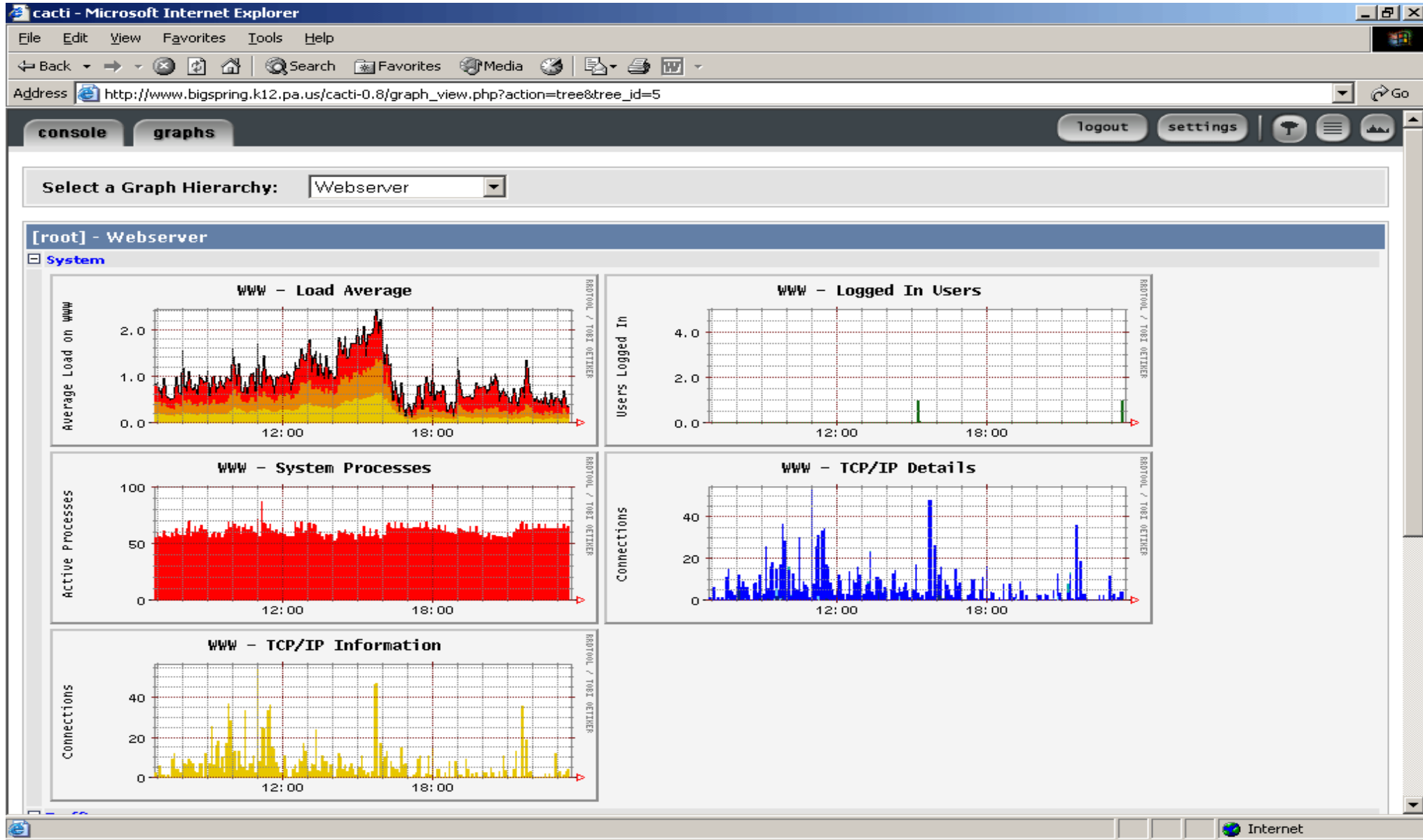
Graph Template Name	<input type="checkbox"/>
Create: ucd/net - CPU Usage	<input type="checkbox"/>
Create: ucd/net - Load Average	<input type="checkbox"/>
Create: ucd/net - Memory Usage	<input type="checkbox"/>

SNMP Query [SNMP - Interface Statistics]

Index	Description	Alias	Type	Speed	Hardware Address	IP Address	<input type="checkbox"/>
1	lo		softwareLoopback(24)	10000000		127.0.0.1	<input type="checkbox"/>

Done Local intranet

Cacti



Cacti

